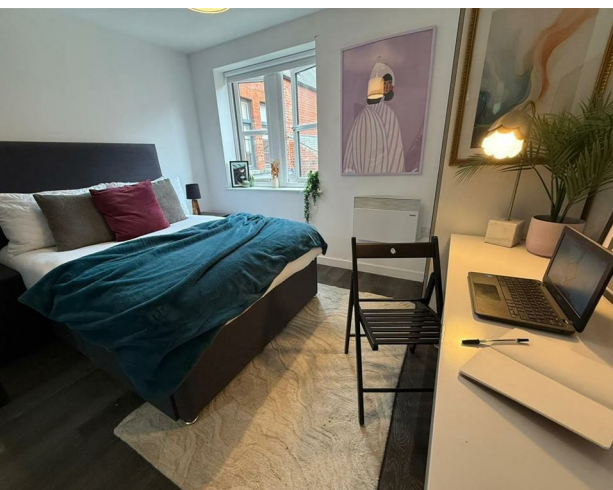
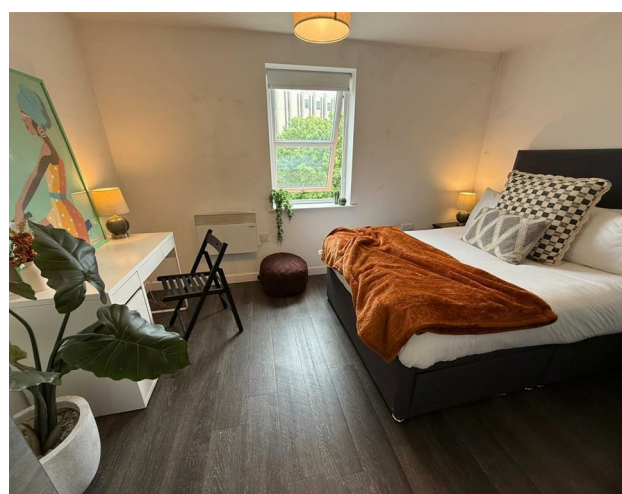
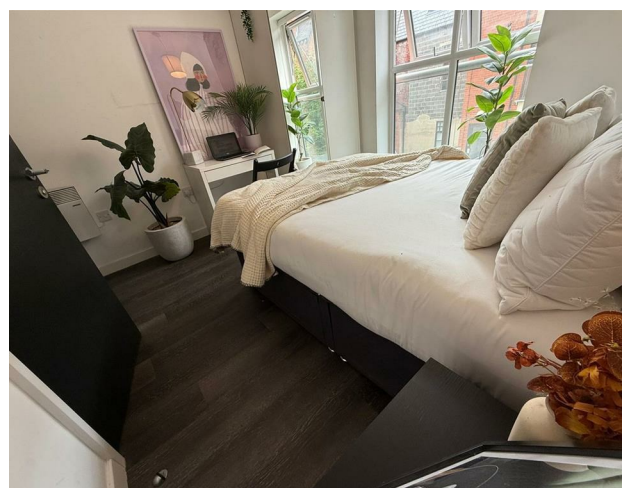


Flat 2, 20A Hyde Terrace, Leeds, West Yorkshire, LS2 9LN
£2,925 Per month

V&L
PROPERTIES



Flat 2, 20A Hyde Terrace, Leeds, West Yorkshire, LS2 9LN

£2,925 Per month

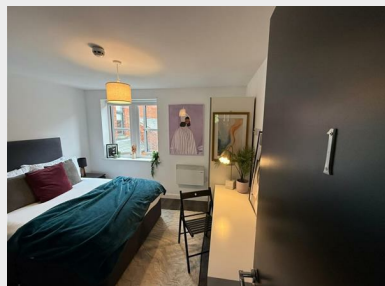
Council Tax Band: Exempt

Welcome to this exceptional, purpose-built apartment situated on Hyde Terrace in Leeds, a prime location for students and professionals alike. This modern residence, constructed in 2017, offers a generous living space of 1,464 square feet, making it an ideal choice for those seeking comfort and convenience.

The apartment features 5 well-appointed bedrooms, each with its own en-suite bathroom, ensuring privacy and ease for all occupants. The spacious reception room provides a welcoming area for relaxation and socialising, perfect for house shares or communal living.

Situated next to all major universities, this property is ideally positioned for students, offering easy access to lectures and campus facilities. The contemporary design and modern amenities make this apartment not only stylish but also functional, catering to the needs of today's lifestyle.







22 Regent Street
Leeds
LS2 7QA
01133 225737
info@vgl-properties.co.uk
vgl-properties.co.uk

